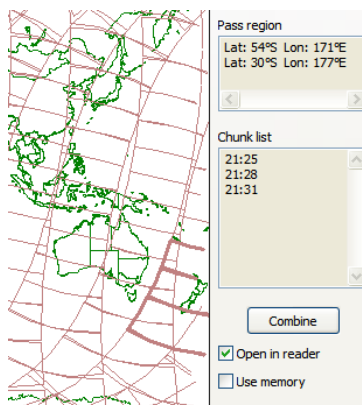


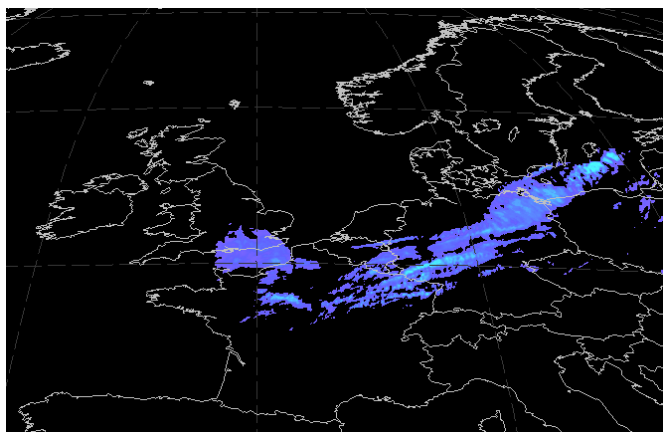
# Metop, GRIB & HDF from *SatSignal Software*

## The Metop Manager



- Monitor the Receiver PC for new EUMETCast data
- Selection of data types to process or discard
- Selection of all or "daytime-only" passes
- Converts AVHRR data to existing HRPT format
- Allows further processing with existing software
- Saves thumbnails of each received "chunk"
- Allows easy identification of saved chunks
- Organises data in \year\month\day\ hierarchy
- Manage saved data – can be up to 13GB/day
- Real-time view of received chunk locations
- Choice of projections including polar views
- Attractive multi-channel false-colour view of latest chunk, or one of the five data channels
- Extra transparent "where-in-the-world" box
- Combine received chunks into a "pass"
- Display that "pass" in the HRPT Reader
- Designed for hands-off, 24 x 7 operation
- It's your rolling window on the world!

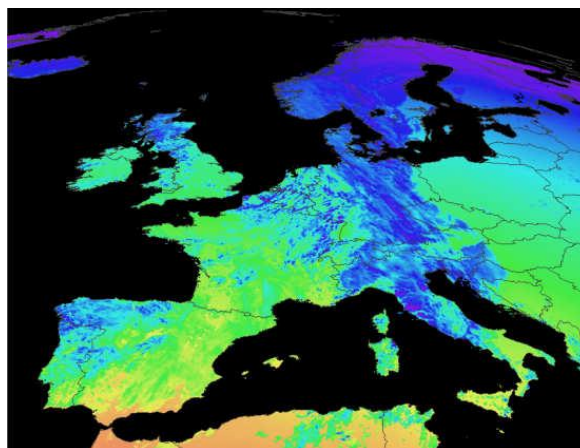
## The GRIB Viewer



Rainfall Estimate from EUMETCast

- Display GRIB Edition-1 and Edition-2 data
- Data from EUMETSAT, DWDSAT and others
- Pressure, temp, RH, PV, fire, precipitation etc.
- Overlay Wind and Tide-Current vectors
- Zoom option for greater detail
- Animate data from different time slots
- Multiple output formats – text output options
- Various annotation options
- Complete hands-off, command-line automation

## The HDF Viewer



Downward short-wave flux from EUMETCast

- Read and display Land Surface Analysis data published by the EUMETSAT LSA-SAF team
- Data available over EUMETCast and FTP
- Snow-cover, albedo, temperature & flux data
- Home location direct readout option
- Europe, Africa, north & south America regions
- Complete hands-off, command-line automation