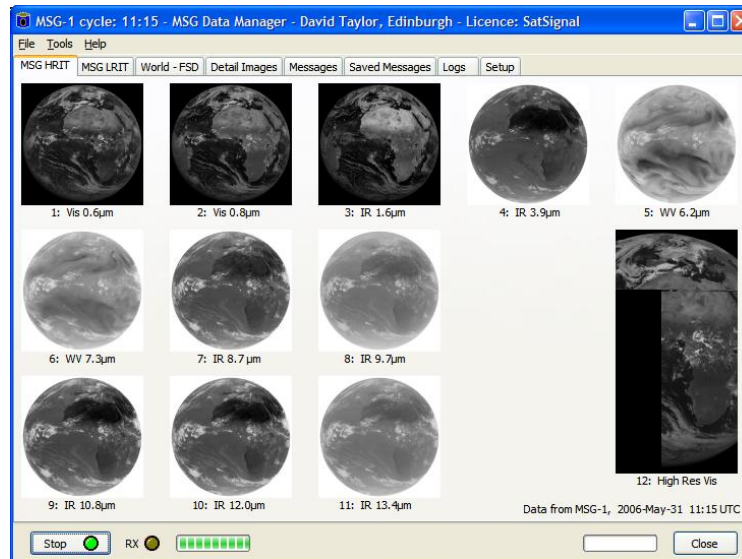


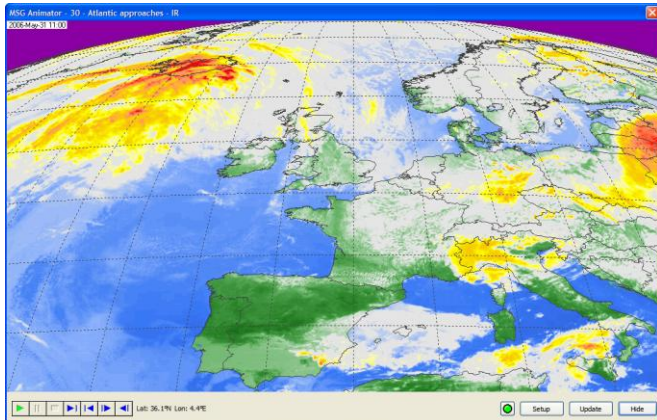
MSG Toolset Plus suite from *SatSignal Software*

The MSG Data Manager



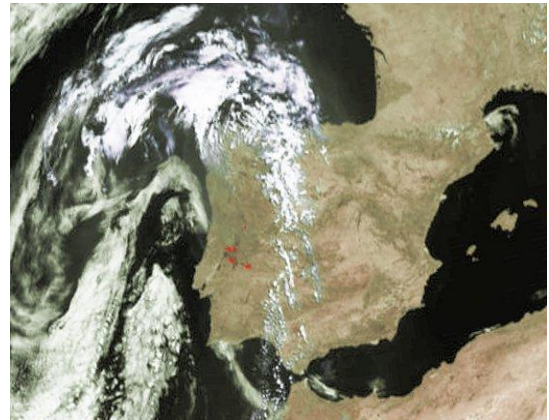
- Monitor the Receiver PC for EUMETCast data
- Channel selection and decompression
- Real-time thumbnail display of selected channels
- Colour display of 4 or 8 channels at full resolution
- Display of current and archived Admin messages
- Optimised data word size reduction to 8 bits
- Save image data in standard formats (PNG, JPEG)
- Selective archive disk space management
- Statistics logging and reporting
- Widely used in industry and universities

The MSG Animator



- Up to 30 simultaneous, independent animations, updated in real time
- Supports Met-7 IDOC, Met-8..10, GOES-E & GOES-W, MTSAT-1R, & Rapid Scanning Service
- Selection of channel and region subset, with country boundary overlay
- Looping and smoothing of animations, with optional image-processing functions and colour lookup tables
- Kiosk and auto-switch modes for public and demonstration areas

GeoSatSignal



- Combine multiple channels for false-colour images
- Accepts MSG, GOES, MTSAT EUMETCast & Internet data
- Join adjacent satellites to make a world-view
- Wide choice of colour models including fire hot spots, RGB, channel differences, user LUTs etc.
- Remap image to standard map projections
- Overlay image on weather chart
- Animate the result
- Complete hands-off, command-line automation